

LEARN FROM OUR CHILD DEVELOPMENT EXPERTS



Connections Early Childhood Training Institute is an intensive, six-week summer training program for early childhood teachers and professionals. The Institute was developed out of the Virginia Frank Child Development Center's Relationship-Based Phase Model, which emphasizes the importance of building strong teacher and caregiver relationships with young children to promote a secure, healthy and productive learning environment.

"This training is professional and informative"

-Teacher participant



CONTACT:

jcfs.org

Linnet Mendez

773.765.3119

linnetmendez@jcfs.org

JCFS is a partner with the Jewish United Fund in serving our community. We embrace diversity. Our commitment to inclusivity is woven throughout our services, programs and welcoming workplace.

We strive to make all of our programs and events accessible. Please call 855.275.5237 at least two weeks in advance to arrange for assistive services.

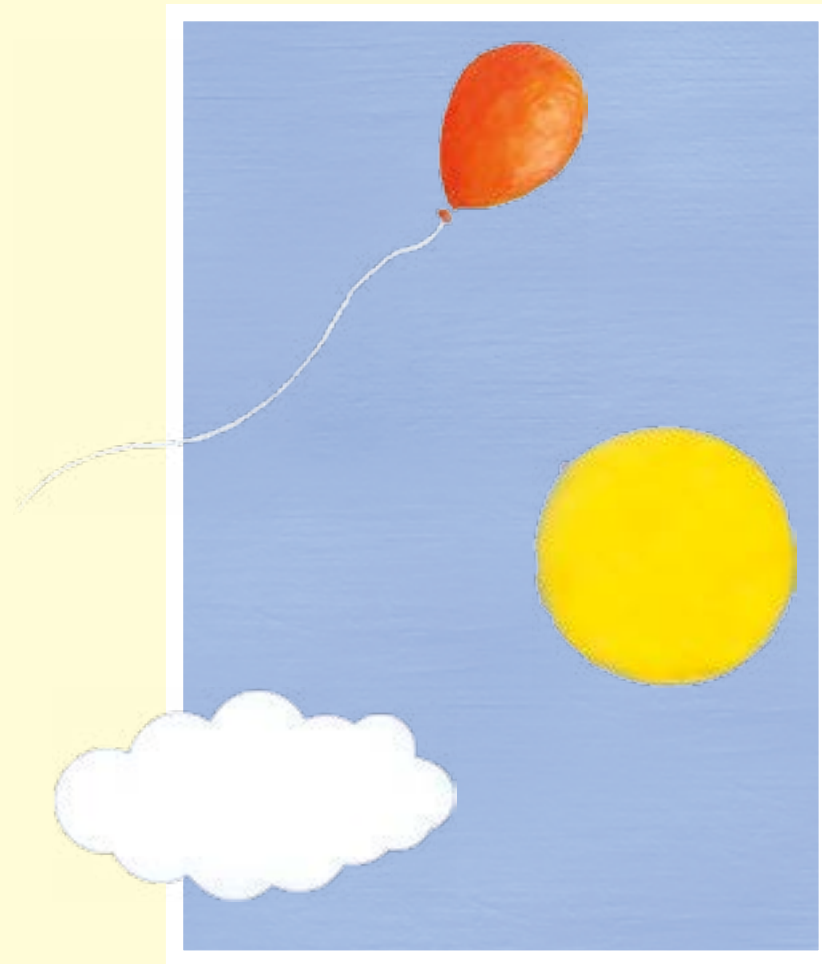
8.2017



**Jewish Child
& Family Services**

Redefine What's Possible.

Virginia Frank Child Development Center
Abe and Ida Cooper Center (Esther Knapp Campus)
6639 N. Kedzie Ave.
Chicago, IL 60645



Connections Early Childhood Training Institute at Jewish Child & Family Services

Virginia Frank Child Development Center

Our training curriculum is based on the concept that a year in an early childhood program can be divided into three phases:

- Separation and attachment
- Autonomy development
- Development of initiative and consolidation of skills



Graduates of Connections Early Childhood Training Institute will gain...

- Fundamental knowledge of the Relationship-Based Phase Model
- Deeper understanding of the social and emotional lives of young children
- Greater awareness of communication and behavior patterns exhibited by preschoolers
- Classroom strategies, practical skills and activities that address the social and emotional needs of children
- Support and guidance from our experienced clinicians throughout the year
- Resources and reinforcement materials, including a copy of *Connections: A Relationship-Based Phase Model*



A collaborative writing project published by the Virginia Frank Child Development Center



WORKSHOPS

Course Catalog

Connections Relationship - Based Phase Model:

Overview and Theory

This workshop will give an overview of the Relationship-Based Phase Model, and the basic psychological theory underpinning the model.

Connections Relationship - Based Phase Model: *Phase One*

This workshop focuses on promoting separation and attachment in children in the preschool classroom setting.

Child Development 0-5

This workshop provides information about child development and the importance of early relationships with caregivers. It will focus on the context within which development occurs: family, community and classroom.

Connections Relationship - Based Phase Model: *Phase Two*

This workshop focuses on promoting autonomy in children in the preschool classroom setting and discusses group development, conflict resolution and communication in the classroom.

Addressing the Neuro-developmental Needs of Children in a Classroom Setting

This training will present to classroom teachers and family support workers information regarding speech-language pathology, occupational therapy and developmental therapy.

Connections Relationship - Based Phase Model: *Phase Three*

This workshop focuses on promoting initiative and independence in children in the preschool classroom setting, including a discussion of mastery, consolidation of skills and goodbye transitions.

Ready, Set, Go! A Developmental Readiness Approach to Toilet Training™

This workshop discusses toilet training from the perspective of an occupational therapist, and outlines for teachers the dynamic process that occurs between a parent and child. Teachers will learn about supporting families through this process.

Hope Over Fear :

How Adults Can Ameliorate the Impact of Trauma on Young Children Through Relationship

This workshop will discuss the impact on children of violence and trauma in the community. Strategies for supporting these children and families will be presented to classroom teachers and family support workers.

Who You Gonna Call?:

Using Mental Health Consultation and Other Resources in the Community

This workshop will describe a model of early childhood mental health consultation and how it can benefit teachers.

Other workshops include:

- Creating Positive Working Relationships with Parents
- Managing Challenging Behavior
- Self-Care and Professional Development



The Virginia Frank Child Development Center is an Authorized Entity under Gateways. Institute workshops meet the organization's highest standards and satisfy necessary continuing education credits for teachers.